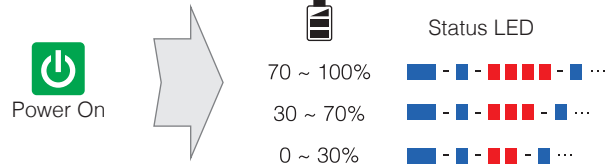


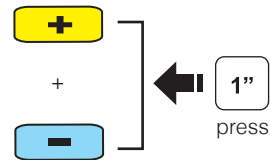
Battery Check



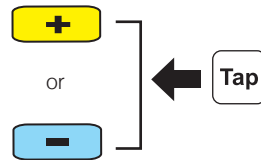
Button Operation



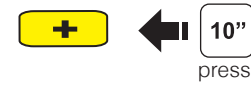
Power On/Off



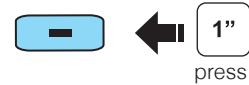
Volume Adjust



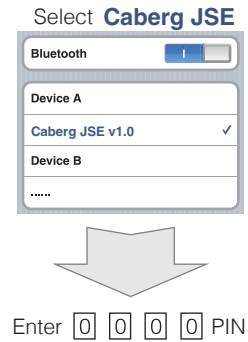
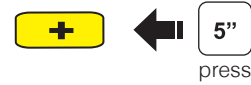
Configuration Menu



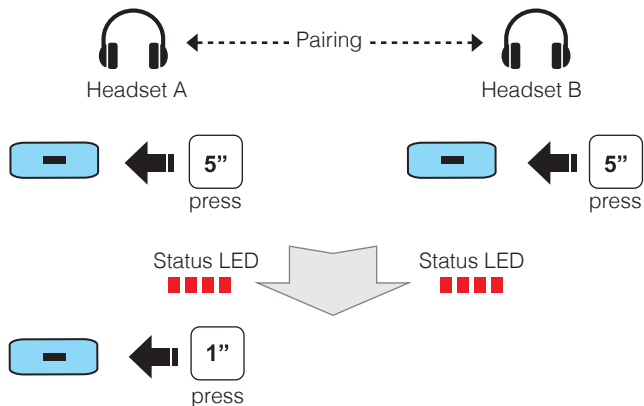
Start/End Intercom



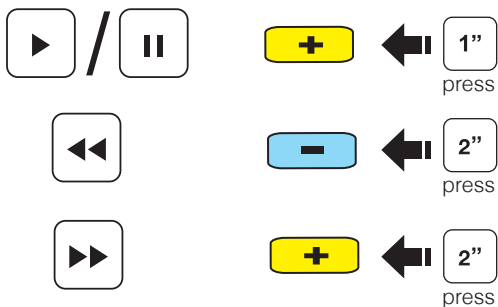
Bluetooth Pairing Phone, MP3, GPS



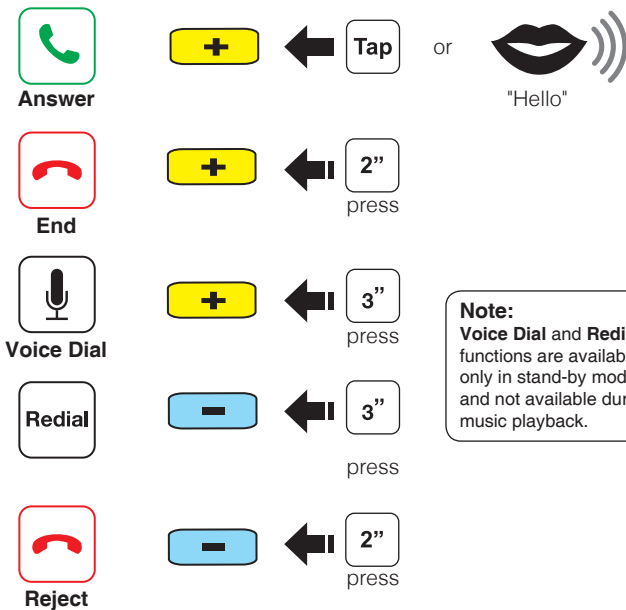
Headset Pairing Intercom



Music



Mobile Phone



A full version of the manual is downloadable at WWW.CABERG.IT.



WWW.CABERG.IT | info@caberg.it

Quick Reference

Type	Operation	Button	Duration	LED
Basic Function	Power-on	(+) Button & (-) Button	1 sec	Solid blue
	Power-off	(+) Button & (-) Button	1 press	Solid red
	Volume adjustment	(+) Button or (-) Button	1 press	-
Mobile Phone	Phone pairing	(+) Button	5 sec	Blue & red alternatively flashing
	Multipoint pairing	(-) Button	5 sec	Red flashing
		(+) Button	1 sec	Blue flashing
	Answer phone call	(+) Button	1 sec	-
	End phone call	(+) Button	2 sec	-
	Reject incoming call	(-) Button	2 sec	-
Intercom	Intercom pairing	(+) Button	3 sec	-
		(-) Button	5 sec	Red flashing
	Start/end intercom conversation	(-) Button of any one of the two headsets	1 sec	-
Music	Play & pause music	(+) Button	1 sec	-
	Track forward/back	(+) Button or (-) Button	1 sec	-
Reset	Fault reset	Reset Button	Pressing	-